

İntegral 3

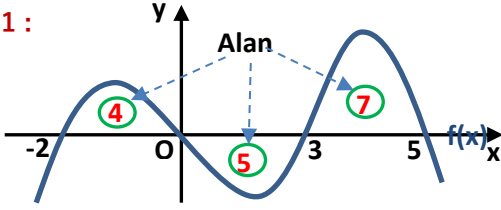
İntegral ile Alan Hesabı



matematikchi.net

9 - Alan Yorumu Yapılarak Çözülen İntegral Soruları 1

Soru 1 :

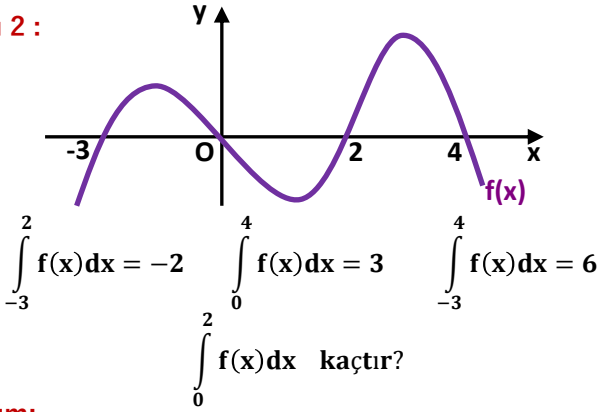


a) $\int_{-2}^5 f(x) dx = ?$

b) $\int_{-2}^5 |f(x)| dx = ?$

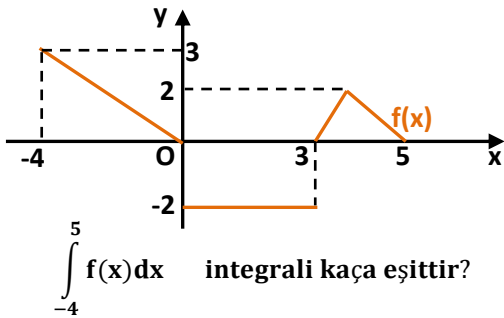
Çözüm:

Soru 2 :



Çözüm:

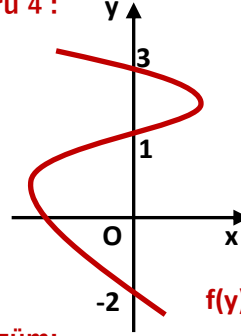
Soru 7 :



Çözüm:

$\int_{-4}^5 f(x) dx$ integrali kaç eştir?

Soru 4 :



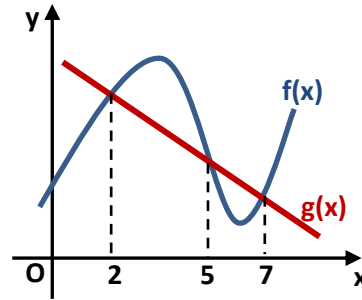
Çözüm:

3. $\int_{-2}^1 |f(y)| dy = 4. \int_1^3 |f(y)| dy$

$\int_{-2}^3 f(y) dy = -2$

$\int_1^3 f(y) dy$ kaçtır?

Soru 5 :



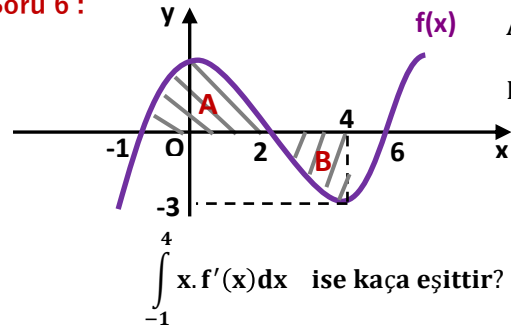
Çözüm:

$\int_5^7 (f(x) - g(x)) dx = -3$

$\int_2^7 (f(x) - g(x)) dx = 1$

$\int_2^5 (g(x) - f(x)) dx = ?$

Soru 6 :



Çözüm:

$\int_{-1}^4 x \cdot f'(x) dx$ ise kaç eştir?

Daha fazla TEST ve KONU ANLATIMI için matematikchi.net

Cevaplar : 1) a) 6 b) 16 2) -5 3) 2 4) 6 5) -4 6) -18